

Transition Tuesday:



Disability Denial and Accessing Services



Who are we ?

KY-SPIN is the Parent Training and Information Center (PTI) in Kentucky. We are also Kentucky's PTI for PACER's Project Launch!

KY-SPIN is the Parent Training and Information Center in Kentucky. Through a peer support model, we provide information, training, and connections to community resources to families and individuals with disabilities. We also give the same services to other professionals. We create and distribute information and resources to youth and young adults with disabilities and their families. These services empower individuals and families to effectively self-advocate.





We Do Not:

Give Legal Advice

Represent individuals or
families in meetings





HERO TEAM



I am 34 years old, I received an IEP when I was in 9th grade to help me with my ADHD and other learning disabilities. Later in life I developed OCD. I also serve as a mentor to youth with and without disabilities though my church.

26 years old WITH Autism diagnosis
12 years advocacy experience
I serve as a mentor for youth with disabilities I had an IEP in school and received speech and occupational therapy. Today I still depend on natural supports in my adult life.



A man with a shaved head and a mustache is shown from the chest up. He is wearing a dark t-shirt and has his right hand pressed against his face, covering his eyes and nose. His expression is one of distress or frustration. The background is a plain, light-colored wall. The entire image is framed by a blue border with a white polka-dot pattern and diagonal stripes.

Diagnoses





DISABILITY DENIAL AND ACCESSING SERVICES



TODAY YOU WILL
LEARN:

WHAT DISABILITY
DENIAL MEANS

THE
IMPORTANCE OF
UNDERSTANDING
YOUR DISABILITY

ACCESSING
SERVICES TO
SUPPORT YOU



DiSABiLiTY

WHAT IS IT?

A PHYSICAL OR MENTAL
DISORDER THAT MAKES IT
DIFFICULT TO WALK, SEE,
HEAR, SPEAK, LEARN, OR
DO OTHER THINGS





DiSABiLiTY DENiAL



WHAT iS iT?



REFUSAL TO
ADMiT OR ACKNOWLEDGE
A DiSABiLiTY.



WHY DO PEOPLE HAVE
DISABILITY DENIAL ?



A large, stylized explosion graphic with a yellow center, red and orange flames, and several yellow stars. White smoke clouds are visible at the base of the explosion.

STIGMA

ABLEISM

WHAM!



WHAT IS STIGMA ?

UNFAIR BELIEFS
ABOUT SOMEONE



WHAT IS ABLEISM ?

DISCRIMINATION OR PREJUDICE
AGAINST INDIVIDUALS WITH
DISABILITIES

USING A DISABILITY AS AN
INSULT

USING COMPLIMENTS TO IGNORE A
DISABILITY



what the doctors recommend

BACK TO BACK





HOW DOES YOUR
DiSABiLiTy AFFECT YOU

WHAT ARE YOUR
STRUGGLES

LEARN HOW TO COPE
WITH YOUR FEELINGS
AND UNDERSTAND
WHAT YOU NEED TO BE
SUCCESSFUL



by, I have a support group, I have some people that I talk to



Reframe Your Thinking

strengths

weaknesses



Overcoming Disability Denial



WHAT WORKS
FOR YOU?





WHAT HELPS
YOU WITH YOUR
STRUGGLES AT
SCHOOL?

AT HOME?

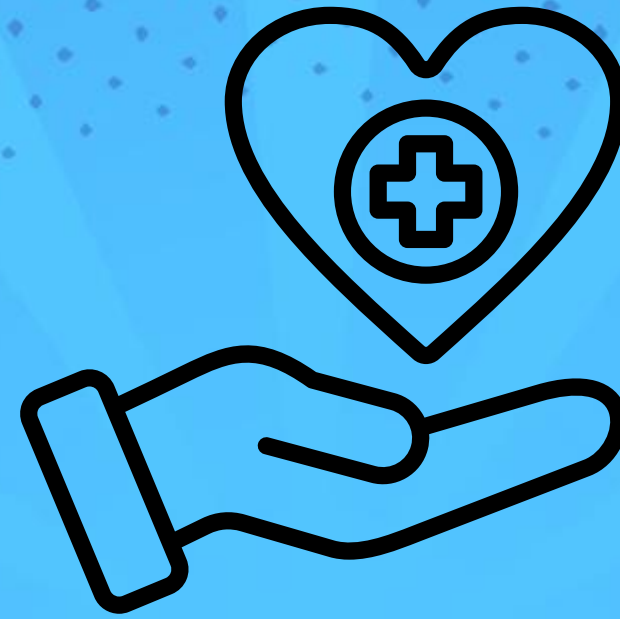


ACCESSING SERVICES TO SUPPORT YOU





ACCOMMODATIONS/MODIFICATIONS



THERAPIES



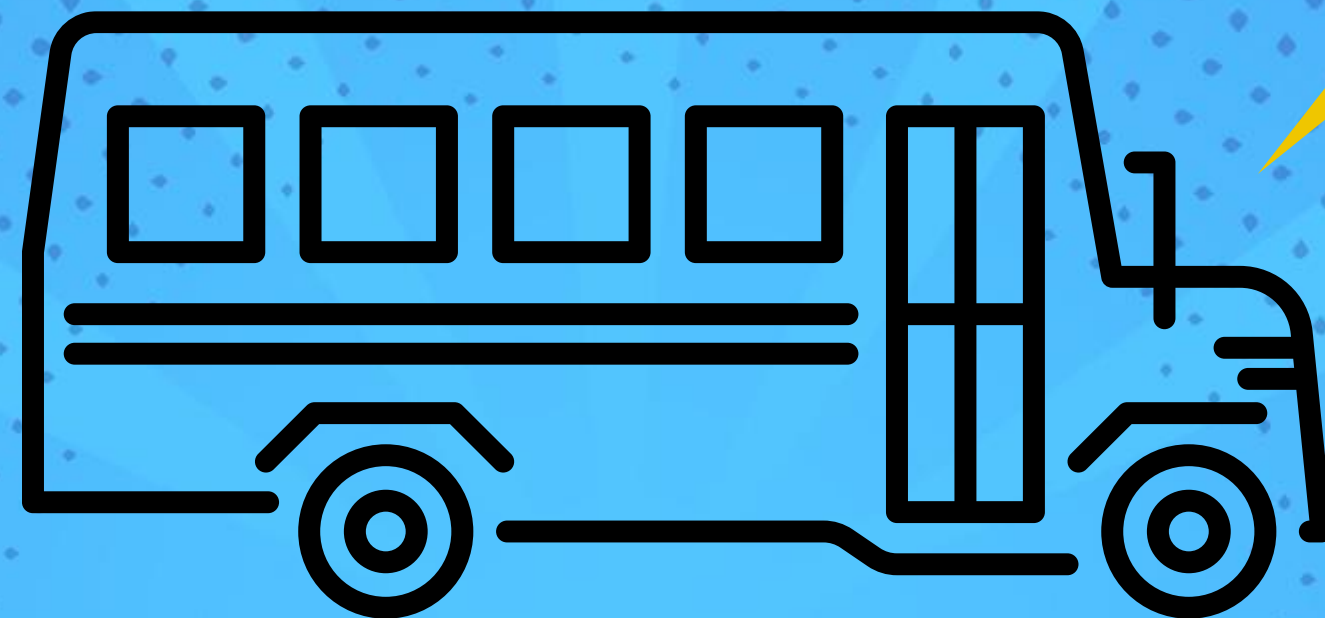
FUNCTIONAL AND EDUCATIONAL GOALS

INDIVIDUALIZED EDUCATION PROGRAM (IEP)





ASSISTIVE TECHNOLOGY



TRANSPORTATION SERVICES



NURSING SERVICES

INDIVIDUALIZED EDUCATION PROGRAM (IEP)

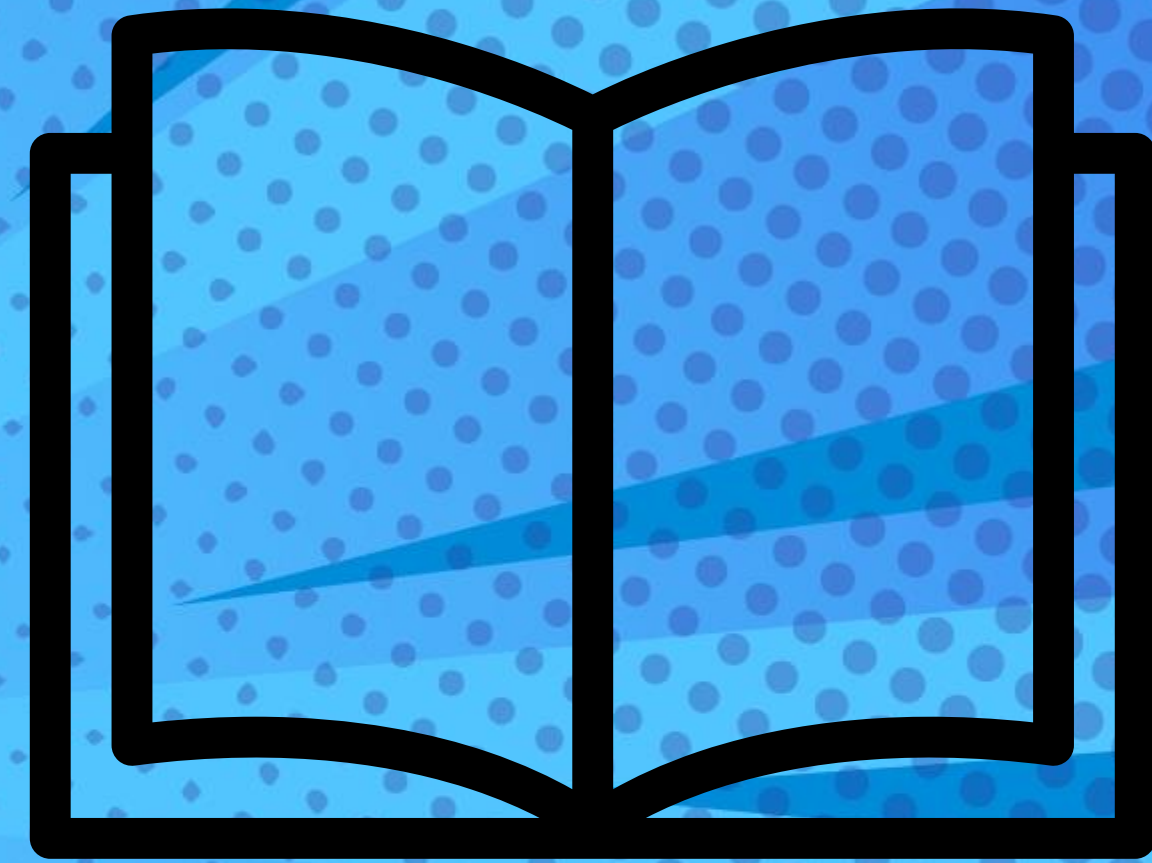


NATURAL SUPPORTS
FRIENDS
TEACHERS
CAREGIVERS



and that's a better route to take instead of to say





TECHNOLOGY



KEY TAKE
AWAYS



DISABILITY DENIAL IS REAL AND
IT COULD BE HARMFUL TO YOU
NOW AND IN THE FUTURE



UNDERSTAND HOW YOUR
DISABILITY AFFECTS YOU
DISCOVER WHAT WORKS FOR YOU



REFRAME YOUR THINKING
ACCESS SERVICES
SUPPORT YOUR WEAKNESSES



the thing that limits us a lot of times

BACK TO BACK



A comic book superhero character with brown hair, blue eyes, and a red suit with a yellow cape. He is standing with his hands on his hips. On his chest is a circular logo with a sun and the text "KY-SPIN". The background is a blue and yellow comic book style with a halftone dot pattern and jagged yellow starburst shapes.

DON'T BE AFRAID TO
BE WHO YOU ARE

DON'T LIMIT
YOURSELF

RESOURCES FOR YOU



SELF ADVOCACY GOALS FOR THE IEP

Adding goals to your IEP that focus on self advocacy will increase your understanding of your disability and give you the skills to speak up for what you need.



I can demonstrate an understanding of my skills and needs.

By the end of IEP cycle, student will be able to identify three accommodations or modifications that are listed on their IEP and ask for them independently with _____% accuracy.



I can demonstrate an understanding of my disability.

By the end of the IEP Cycle, student will be able to communicate with others about their disability and what he/she needs to learn successfully with _____% accuracy.



I can understand and speak up for my needs.

By the end of the IEP cycle, the student will be able to identify specific environmental modifications and explain why they are useful to him/her with _____% accuracy.

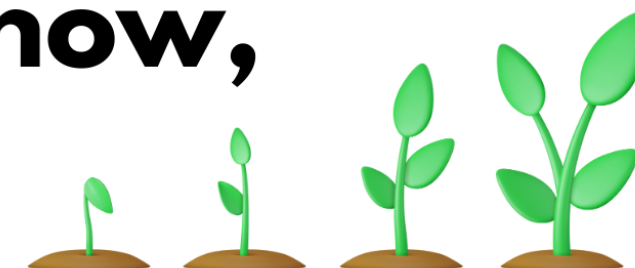


I know how to advocate for myself.

By the end of the IEP cycle, student will be able to participate in school meetings and advocate for themselves with the support of parents and teachers with _____% accuracy.



You gotta know, to grow...



Negative Ableism is when people use disabilities as insults, or as an excuse for discrimination.

Examples: "That's lame," or "Are you blind?"



What is Ableism?

"discrimination or prejudice against individuals with disabilities"*

*Merriam Webster Dictionary

What is Stigma?

"set of negative or unfair beliefs that a society or group of people have about something"*

*Merriam Webster Dictionary

Positive Ableism is when people use kindness or compliments as a way to ignore the disability.



Example: "You don't look like you have a disability"

Know your RIGHTS!

The Americans with Disabilities Act (ADA) prohibits discrimination.

SPEAK UP!

Ableism affects everyone. Advocate.

Know YOURSELF!



Why do they matter to me?

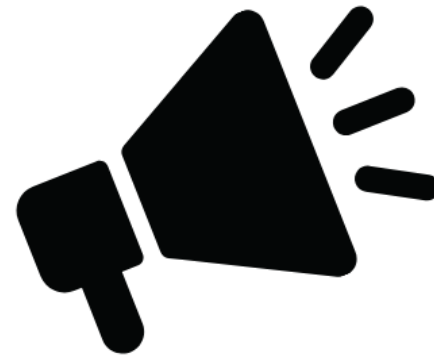
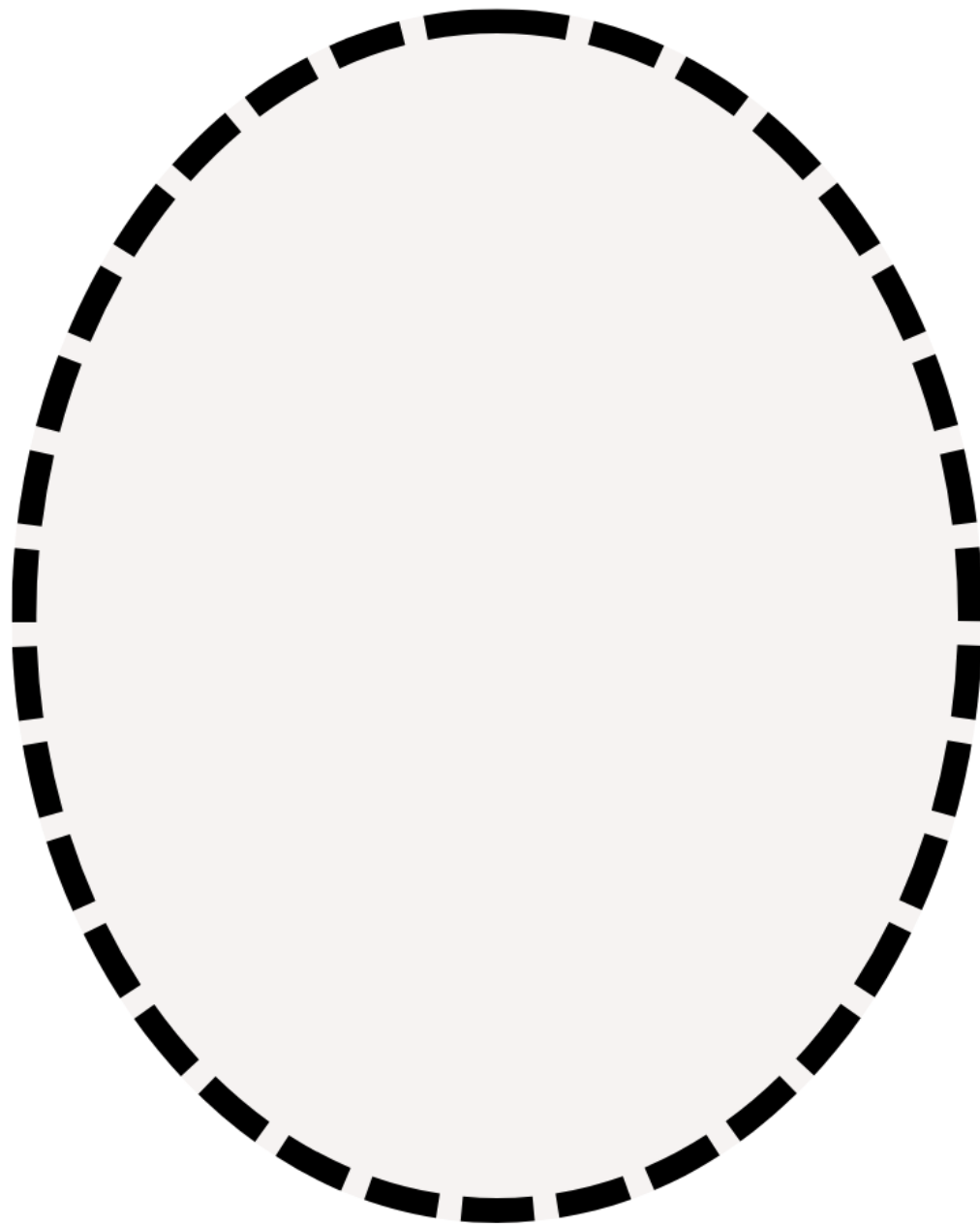
When **ableism** and **stigma** are present - so are discrimination and bullying



Overcoming Ableism

Picture This!

Draw or write about your greatest strengths.

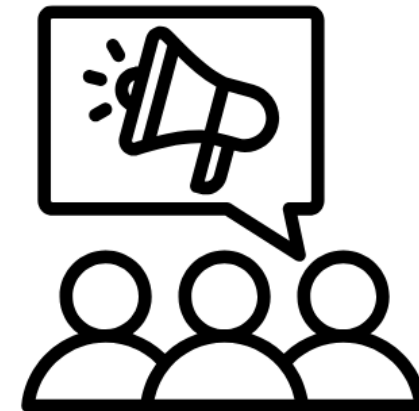


Talk it out!

Describe some everyday examples of **Ableism** at school and in your community

Advocate

Make a list of ways you can speak out against **Stigma** and **Ableism**



ANY
QUESTIONS



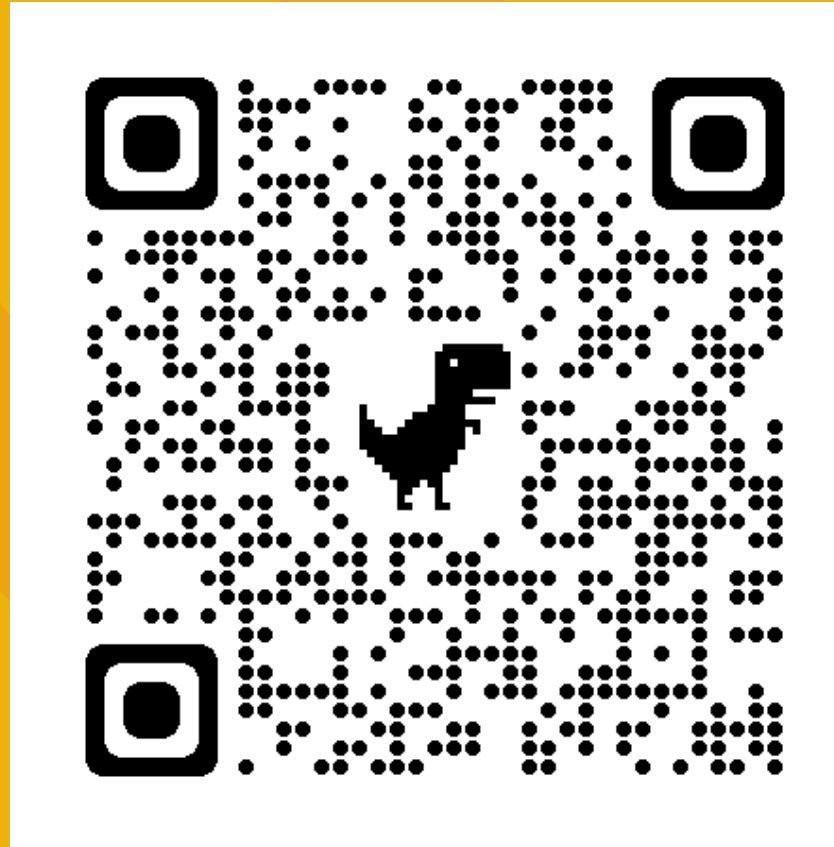
DISABILITY DENIAL ACCESSING SERVICES

WHAT'S NEXT ?

MANAGING
YOUR MONEY

4-23-24

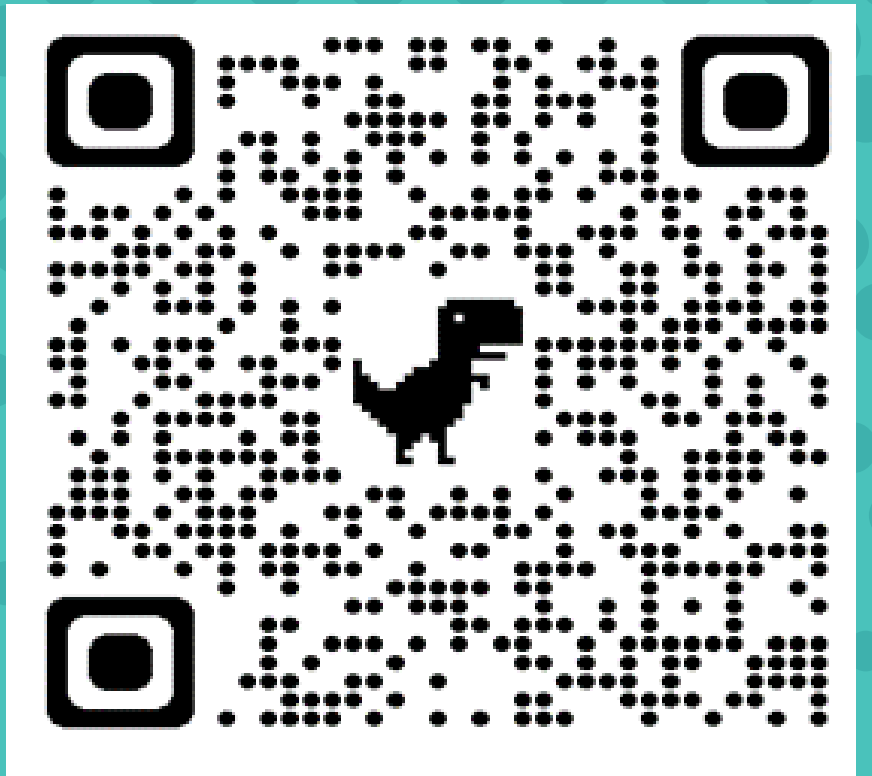
9:30 AM -10:15 AM EST



1-800-525-7746

WWW.KYSPIN.COM

PLEASE
COMPLETE
OUR
EVALUATION



<https://forms.gle/1NN5scMFQs65bZvs7>