



**KY-SPIN'S FALL VIRTUAL CONFERENCE  
BEYOND COVID: SUPPORTING  
FAMILIES OF STUDENTS WITH  
DISABILITIES**

**DATE: WEDNESDAY, AUGUST 4, 2021**

**TIME: 9:00 AM - 4:00 PM ET**

**[Register Here](https://conta.cc/2Ux3z72)**  
**(<https://conta.cc/2Ux3z72>)**

**Topics Include:**  
**(see page 2 for speaker info)**

- (9a-10a) Skills for Effective Partnership (KY-SPIN)
- (10a-11a) Successful Transition to In-Person Learning (KDE)
- (11a-12p) IDEA/IEP and Compensatory Education (KY-SPIN)
- (1p-2p) COVID and Beyond - Resilience and Resources (BHDID)
- (2p-3p) Social Strategies and Friendship Building (BCS)
- (3p-4p) Panel Discussion - Family Perspective (KY-SPIN)

**For More Information Contact:**  
**KY-SPIN - 1-800-525-7746 or email:**  
**stella@kyspin.com**

**Free**

# Speakers



## Shasta Hensley, Kentucky Department of Education (KDE)

Shasta Hensley is an Exceptional Child Consultant for the Kentucky Department of Education in the Office of Special Education and Early Learning. Shasta has served in public education for 16 years. During most of that time, she served in the public-school setting as a teacher. In her role with KDE, she serves Kentucky students, families and teachers in the areas of Parent and Family Engagement and English Learners with disabilities.



## Bill Buchanan, Kentucky Department of Education (KDE)

Bill Buchanan is a program consultant in the Division of IDEA Implementation and Preschool (DIIP), Office of Special Education and Early Learning (OSEEL), Kentucky Department of Education (KDE). He received degrees from Berea College and the University of Kentucky. Bill supports the state-funded preschool program, and he serves on the Kentucky Child Care Advisory Council, Kentucky Early Childhood Advisory Council's Professional Development Committee, Kentucky AWARE/School Climate Transformation State Management Team, Kentucky Collaborative for Families and Schools Advisory Council, and the State Interagency Council's Social Emotional Health and Well Being Standing Committee. His interests include school readiness, trauma-informed care practices, implementation science, and family engagement.



## Amanda Bruce, Bullitt County Schools (BCS)

Amanda Bruce is the Compliance Coordinator for Bullitt County Schools (August 2021). Prior to this role Amanda has served as an Exceptional Child Services Consultant for the Ohio Valley Educational Cooperative (OVEC) for the last 4 years and prior to that worked as a Low Incidence teacher for 10 years. Amanda's work with teachers and with districts in the OVEC region has been focused on compliance, supporting instruction for all students, and student social and emotional support needs. Amanda has also worked with Low-Incidence Consultants and KDE Consultants throughout the state on developing trainings on a variety of topics including: IEP and Progress Monitoring Compliance, Autism, Behavior, Communication, Transition Needs, Transition Compliance, Instruction for students with Disabilities and Programming for students with Complex Needs. Amanda also has the privilege of being the sibling of an Adult on the Autism Spectrum and a spouse who is also on the Autism Spectrum.



## Diane M. Gruen-Kidd, LCSW (BHDID)

Diane is a Licensed Clinical Social Worker with over two decades of experience working directly with youth and families. Following attainment of her Bachelor's degree in Psychology from Transylvania University, she attended the Kent School of Social Work at the University of Louisville, earning her MSSW. Currently, Diane works at the Department for Behavioral Health, Developmental and Intellectual Disabilities as a Program Administrator. Previously, Diane worked as a therapist for bluegrass.org/Scott County (now New Vista), meeting with youth and families not only in the office but also in schools and client's homes. Diane also has many years of experience working with youth in placement, having been a Program Manager at Metro Group Home in Lexington and a Youth Care Worker and Acting Assistant Director at Clark County Youth Shelter in Jeffersonville, IN.



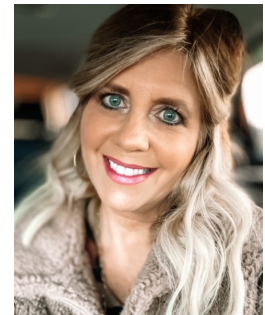
## Rhonda Logsdon, KY-SPIN

Rhonda Logsdon is the Executive Director for KY-SPIN. She has been with KY-SPIN for over 30 years in various capacities. She is a sibling and began as a teenager presenting for KY-SPIN. She is a proud mom who foster/adopted the greatest gift of her life! She is dedicated to assisting families and persons with disabilities to access needed information to be successful. Rhonda believes all children, no matter their disability, can achieve great things! With over 30 years of experience in the disability field, Rhonda brings experience not only as a professional, but as a family member.



## Kellie Smith, KY-SPIN

Kellie Smith is the Assistant Director for KY-SPIN. Kellie has a son with a Traumatic Brain Injury and their road has not been easy. As a young single mother in Eastern Kentucky she was unfamiliar with disabilities and special education. She had a difficult time finding resources, information, assistance or even people that could relate with her situation. Kellie's goals are to educate parents well as connect them with valuable resources and opportunities to assist in helping their children live their best life. Kellie communicates very well with individuals with disabilities, especially those with cognitive delays. Kellie is a member of the Governor-appointed Statewide Council for Vocational Rehabilitation and served on the Governor-Appointed Hart Supported Living Council. Kellie also serves on the Prichard Committee's Kentucky Collaborative for Families and Schools Advisory Council where she serves as a parental voice at each organization.



## Stella Beard, KY-SPIN

Stella Beard is the Virtual Consultant for KY-SPIN. She served as Assistant Director until May of 2021 where she then went to part time as a consultant so she could spend more time with her family. Stella has been involved in Special Education and advocacy for many years. Her son Clayton has Williams syndrome which is what lead her to advocacy. Stella has worked in Special Education in different school systems as a Parent Resource Coordinator, Special Education Liaison and Special Education Program Assistant. In the past, she has facilitated Admission and Release Committee (ARC) meetings for middle and high school students in a school district. She has trained around the state on many subjects including Transition and Medicaid Waivers, she was the Executive Director for The Arc of Kentucky and was also the Parent Enrichment Coordinator for The Arc of Kentucky. She has served on many statewide committees. In 2009, She received the Betty Triplett Award sponsored by the Kentucky Partnership for Families and Children. This award is given each year to an outstanding professional who excels in working with families and children with disabilities.