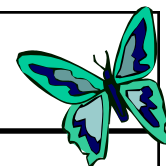


SPINNING WHEEL

June 2010



National News

National Underinsured Resource Directory Developed by the Patient Advocate Foundation, the National Underinsured Resource Directory helps people find alternative coverage to supplement their existing health insurance plans. Users can either search the online resource guide using keywords or complete a quiz about their unique situation. <http://patientadvocate.org/help4u.php>

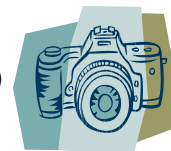
The Kentucky Family to Family Health Information Centers (F2F HIC) are located in each of the Commission for Children with Special Health Care Needs (CCSHCN) Offices. The F2F's can help you find information and services. A network of Support Parents is being developed to provide support to other parents. If you have questions or would like to help another family you can reach Sondra Gilbert in Owensboro at 877-687-7038 Ext. 2123 or in Louisville, Debbie Gilbert 800-232-1160 Ext. 279

KY-SPIN Consultants are present at the Commission for Children with Special Health Care Needs (CCSHCN) Clinics throughout the state at various times each month. For information on clinic visits & SPIN workshops contact us toll-free at 1-800-525-7746 or by e-mail at spininc@kyspin.com.

The **Kentucky State Advisory Panel for Exceptional Children** (SAPEC) provides policy guidance with respect to special education and related services for children with disabilities in Kentucky as defined by special education regulations and applicable state and federal law. The Panel advises and assists the Department of Education regarding the provision of appropriate services for children with disabilities. The authority for the Panel is mandated under the Individuals with Disabilities Act (20 U.S.C. 1400 et seq. as amended). The Panel conducts public forums as a part of their meetings. The public is encouraged to comment via e-mail or by coming to a meeting. For information, contact Renee Scott at renee.scott@education.ky.gov or by calling Kentucky Department of Education (KDE) at (502) 564-4970. Upcoming SAPEC public forums are scheduled for June 17, 2010 at 6:30pm at the Cumberland Falls State Resort Park in Parkers Lake, KY and then on October 14, 2010 at 6:30pm at Lake Barkley State Resort Park in Cadiz, KY. This is a time for families and professionals to voice your concerns to the panel and they will pass them along to KDE.

Did you know:

Many times it is helpful to explain your child's disability and what is involved to help others understand. Introducing Your Child to the School Community Using a "Student Snapshot" Format (PACER) <http://www.pacer.org/webinars/planninginclusion/IntroducingYourChildtotheSchoolCommunity.pdf> is a wonderful resource for families.



Spotlight on Kentucky: KDE/DECS parent survey

If your child receives special education services, you can help the Kentucky Department of Education's Division of Exceptional Children Services (KDE/DECS) improve parent involvement in your schools by completing a short survey. Data from the survey will be collected and analyzed by the Human Development Institute at the University of Kentucky (HDI/UK). HDI/UK will then consult with KDE/DECS about improving services to parents with disabilities by identifying and targeting specific training, services and programs. A random sample of parents will receive the survey by mail, and parents also may complete the survey online by going to <http://tinyurl.com/KYParent>

SPIN (Special Parent Involvement Network) is a statewide project of KY-SPIN, Inc. that "HELPS YOU HELP YOUR CHILD." SPIN PTI (Parent Training & Information Project) is funded by the U.S. Dept. of Education. **SPIN** provides training, information and support to people with disabilities, their parents and families, and information on all types of disabilities and topics for all age groups. There are no fees for **SPIN** services. Consultation, resource materials, and referral services are also available. You can call us toll-free at 800-525-7746 or at 502-937-6894, our e-mail address is spininc@kyspin.com and our website is www.kyspin.com; our main office is located at 10301-B Deering Road / Louisville, KY 40272.





**Early Childhood: WHAT HAPPENS IN A SUCCESSFUL TRANSITION?
A Step by Step Guide For Transition from First Steps to Public school**

STEP 1: THE TRANSITION CONFERENCE

Your First Steps Service Coordinator (SC) will contact your local school district up to a year before your child's third birthday. This is to let the school district know that a child with special needs may be entering. At this time, First Steps will not give specific information about your child or your family's name.

The First Steps SC must schedule a transition conference "up to nine months and at least 90 days" before your child's third birthday. (KY recommends that the transition conference take place as part of the child's Individual Family Service Plan (IFSP) close to age 2.5 years). This gives everyone plenty of time to prepare for the best possible transition. The purpose of the transition conference is to allow you to explore all preschool programs in your community. You will be involved in planning the steps that need to be taken before your child enters the program selected. This is especially important if services will be provided through the school district or other public source. Your permission is needed, and it is very important to participate in the conference so you can make an informed choice.

The transition conference should be planned at a time and place that is convenient for you and the other members of the team. The First Steps Service Coordinator must set up the transition conference. He or she will chair the development of the transition plan as part of your IFSP review. Besides the Service Coordinator and you, people who should attend the transition conference are: any family members or friends that you want to invite, a representative from the local school district, a representative(s) from Head Start and/or private preschool program (if you are considering these), staff from other programs that your child may be attending; and any other professional that may provide helpful information.

At the transition conference you will discuss: possible services available in your community when your child turns three years old, the application and/or referral process for program options, types of information and experiences you may need to help decide appropriate services for your child, arrangements for you to visit programs (see form, page 25 at the link below), information and records (i.e., medical, educational, evaluations) that First Steps is keeping for your child and how copies of these records can be shared; and additional information that may be necessary to determine if your child could be potentially eligible for preschool services through your local school district or other programs.



By: "Step by Step: A Family Guide for Transition into Preschool" © 2008 (updated January 2009)
KECTP <http://chfs.ky.gov/NR/rdonlyres/F00D7C8A-9C67-48D9-ACFF-90FE6B2B07B9/191590/UpdatedStepbyStepGuideEnglishverson.pdf>

Transition: Transition to Adulthood For Youth With Special Health Care Needs

Transition involves changes, adding new experiences and responsibilities, and learning new things. If you are fourteen or older, you need to start thinking about what you want to do after graduation from high school, and transferring your health care to an adult provider.

The following are some suggestions of things that you begin to do to develop more independence:

1. Learn as much as you can about your health care needs.
2. Begin to develop an up to date medical summary/history. Include conditions, operations, medications, and treatments with dates and names of physicians.
3. Learn to make and keep your medical appointments, refill prescriptions and order supplies.
4. Begin to locate adult health care providers.
5. Explore volunteer and work activities. Begin to think about possible career interests.
6. If you plan to attend a technical school or college, think about resources you will need such as transportation, accommodations, and financial aid.
7. Continue to gain knowledge related to your health care needs and develop self help skills for independence.
8. Find and participate in social and leisure activities.
9. Develop an emergency plan.
10. Think about how you will pay for your health care needs.

Prepared by Judy Blackwell, MSW at the Commission For Children With Special Health Care Needs
Lexington, Ky.

This newsletter, published by Kentucky Special Parent Involvement Network, Inc.'s Parent Training and Information Project (SPIN), is funded through a grant from the U.S. Department of Education, and does not necessarily reflect the views of the Department of Education. Articles contained herein are for informational purposes only and do not imply endorsement by SPIN or KY-SPIN, Inc.

