



SPINNING WHEEL

May 2010



National News

- ◆ National Children's Mental Health Awareness Week May 2-8, 2010! The National Federation of Families for Children's Mental Health declares the first full week in May as National Children's Mental Health Awareness Week. This week is dedicated to increasing public awareness about the triumphs and challenges in children's mental health and emphasizing the importance of family and youth involvement in the children's mental health movement! For more information go to: <http://www.ffcmh.org/>
- ◆ May 9 -15, 2010 will be the first ever Williams Syndrome National Awareness Week For more information go to: <http://thenewwsa.org/content/walk-williams-campaign> & <http://www.williams-syndrome.org/>

The Kentucky Family to Family Health Information Centers (F2F HIC) are located in each of the Commission for Children with Special Health Care Needs (CCSHCN) Offices. The F2F's can help you find information and services. A network of Support Parents is being developed to provide support to other parents. If you have questions or would like to help another family you can reach Sondra Gilbert in Owensboro at 877-687-7038 Ext. 2123 or in Louisville, Debbie Gilbert 800-232-1160 Ext. 279

KY-SPIN Consultants are present at the Commission for Children with Special Health Care Needs (CCSHCN) Clinics throughout the state at various times each month. For information on clinic visits & SPIN workshops contact us toll-free at 1-800-525-7746 or by e-mail at spininc@kyspin.com.

The **Kentucky State Advisory Panel for Exceptional Children** (SAPEC) provides policy guidance with respect to special education and related services for children with disabilities in Kentucky as defined by special education regulations and applicable state and federal law. The Panel advises and assists the Department of Education regarding the provision of appropriate services for children with disabilities. The authority for the Panel is mandated under the Individuals with Disabilities Act (20 U.S.C. 1400 et seq.as amended). The Panel conducts public forums as a part of their meetings. The public is encouraged to comment via e-mail or by coming to a meeting. For information, contact Renee Scott at renee.scott@education.ky.gov or by calling Kentucky Department of Education (KDE) at (502) 564-4970. Upcoming SAPEC public forums are scheduled for June 17, 2010 at 6:30pm at the Cumberland Falls State Resort Park in Parkers Lake, KY and then on October 14, 2010 at 6:30pm at Lake Barkley State Resort Park in Cadiz, KY. This is a time for families and professionals to voice your concerns to the panel and they will pass them along to KDE.

Transition: Transition Information For Youth With Special Health Care Needs

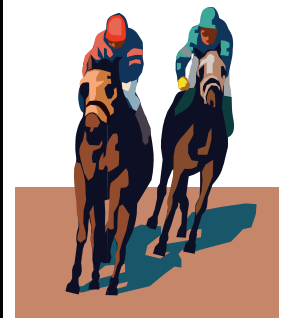
The following is a list of things to review in order to start thinking about decisions that need to be made for successful adult transition.

1. Evaluate your knowledge of your health care needs.
2. Continue to learn self help skills for independence.
3. Learn how to talk with medical providers about age appropriate health information.
4. Develop a medical history/summary.
5. Make your own medical appointments, refill prescriptions, and order supplies.
6. Begin to plan for transfer to adult medical providers by locating local providers.
7. Explore health care coverage options both public and private.
8. Prior to turning 18 contact the Social Security Administration to discuss continued eligibility.
9. Explore volunteer and work opportunities prior to graduation from high school.



Prepared by Judy Blackwell, MSW at the Commission For Children With Special Health Care Needs in Lexington, Ky.

SPIN (Special Parent Involvement Network) is a statewide project of KY-SPIN, Inc. that "HELPS YOU HELP YOUR CHILD." SPIN PTI (Parent Training & Information Project) is funded by the U.S. Dept. of Education. **SPIN** provides training, information and support to people with disabilities, their parents and families, and information on all types of disabilities and topics for all age groups. There are no fees for **SPIN** services. Consultation, resource materials, and referral services are also available. You can call us toll-free at 800-525-7746 or at 502-937-6894, our e-mail address is spininc@kyspin.com and our website is www.kyspin.com; our main office is located at 10301-B Deering Road / Louisville, KY 40272.





Early Childhood: WHAT IS THE DIFFERENCE BETWEEN FIRST STEPS AND SCHOOL DISTRICT PRESCHOOL PROGRAMS?

Several differences exist between the services offered through First Steps (the lead agency to serve children with disabilities B - 3) and the school district (the lead agency at the 3rd birthday for children with special needs). Some differences between the programs are described below.

<p align="center">FIRST STEPS Early Intervention Services</p>	<p align="center">KENTUCKY PRESCHOOL PROGRAM (for children with special needs)</p>
<p>What ages are covered? Birth to three (3) years (infants and toddlers).</p>	<p>What ages are covered? Ages three (3) and four (4), as of the child's 3rd birthday.</p>
<p>What children are eligible? Children with a developmental delay, or children with a medical condition which has an established risk for developmental delay.</p>	<p>What children are eligible? Children with a disability that has an "adverse effect on the child's educational performance."</p>
<p>Who determines eligibility? The eligibility team comprised of the parents, Point of Entry staff, and Primary Level Evaluator.</p>	<p>Who determines eligibility? The Admissions and Release Committee (ARC) comprised of a parent, school personnel, and others.</p>
<p>How is eligibility determined? 1) A multidisciplinary evaluation that shows the child has a significant delay in physical, cognitive, communication, social/emotional or adaptive development, or 2) The child has a medical condition with an established risk for developmental delay.</p>	<p>How is eligibility determined? Based on a multidisciplinary evaluation drawn from several sources, with required components (current within one year).</p>
<p>What are the basic services? Screening, service coordination, evaluation, assessment, developmental intervention, family services, nutrition, physical therapy, occupational therapy, communication development, vision/hearing services, respite, assistive technology, and transportation. The services are provided by multiple agencies, linked to First Steps, who work together to provide comprehensive services.</p>	<p>What are the basic services? Preschool services that focus on all areas of child development (physical, cognitive, communication, social/emotional, and self - help). If the child is eligible for special education and related services, those services will be provided in the context of the preschool program. "Related services" if needed to benefit from the specially designed instruction (e.g., occupational, physical, speech therapies; assistive technology; special transportation; parent education; extended school year (ESY) services.</p>
<p>Where are the services specified? The type and amount of services to be provided in natural environments for the child and family are described in the Individualized Family Service Plan (IFSP). The IFSP addresses child needs and the family resources, priorities and concerns related to identified developmental needs of the child.</p>	<p>Where are the services specified? The type and amount of services for the child are in the Individual Education Program (IEP).</p>
<p>How are services provided? Services may be provided in a variety of natural environments. These environments are both places (home, center - based or community settings) and opportunities where a child can enjoy everyday developmentally appropriate activities with children who do not have a disability. The consultative approach used with families by First Steps supports quality interaction between the child and family. Together, they identify teachable moments within daily routines and practice strategies to assure that learning and development occur.</p>	<p>How are services provided? Services are provided in the least restrictive environment (LRE), which are settings where children with disabilities are educated with their peers who do not have disabilities. Preschool education and related services may be provided directly by the district, or through contracting or arrangement with other agencies. Settings include centers or classes; parent/ child programs at home or elsewhere; and programs where itinerant staff may visit hospitals or other community settings.</p>



By: "Step by Step: A Family Guide for Transition into Preschool" © 2008 (updated January 2009) KECTP
<http://chfs.ky.gov/NR/rdonlyres/F00D7C8A-9C67-48D9-ACFF90FE6B2B07B9/191590/>



Spotlight on Kentucky: Kentucky's System to Enhance Early Development (KY SEED)

The SEED program works with various communities, programs and agencies to develop a system of care for children from birth - 5 with social or emotional health needs. For more information on KY SEED, contact DMHDDAS at (502) 564-4456.

Did you know:

If you do not agree with the evaluation that was completed by the school "A parent shall be entitled to only one (1) independent educational evaluation (IEE) at public expense each time the public agency conducts an evaluation with which the parents disagree." Taken from Kentucky Administrative Regulations (KAR): 707 KAR 1:340. Section 2(6)

This newsletter, published by Kentucky Special Parent Involvement Network, Inc.'s Parent Training and Information Project (SPIN), is funded through a grant from the U.S. Department of Education, and does not necessarily reflect the views of the Department of Education. Articles contained herein are for informational purposes only and do not imply endorsement by SPIN or KY-SPIN, Inc.

