

SPINNING WHEEL

December 2010



National News:

- ◆ Guide on Supporting Career Development of Youth with Learning Disabilities NCWD/Youth (National Collaborative on Workforce and Development for Youth) recently released *Charting the Course: Supporting the Career Development of Youth with Learning Disabilities*. This Guide is intended to help practitioners, administrators, and policymakers in secondary and postsecondary education programs, transition programs, One-Stop Career Centers, youth employment programs, and community rehabilitation programs to improve services and outcomes for youth, ages 14 to 25, with diagnosed and undiagnosed learning disabilities. The guide includes numerous quick reference charts, tables, and tools for professionals who work directly with youth. In-depth information is provided on a variety of topics, including the types and impact of learning disabilities, needed supports, and research-based interventions. <http://www.ncwd-youth.info/ld-guide>
- ◆ Web-based Module on Communication for Collaboration Learn about effective communication practices that can be used to promote collaboration with professionals and families in early care and education, and intervention settings. The web-based module, developed by CONNECT: The Center to Mobilize Early Childhood Knowledge, includes video clips, activities, and handouts that are designed to be embedded into existing curricula, coursework and other professional development opportunities. <http://community.fpg.unc.edu/connect-modules/learners/module-3>
- ◆ Mental Health and Juvenile Justice Resources A new resource series examines the benefits and challenges of collaborating to meet the mental health needs of youth in the juvenile justice systems. The three briefs were published by the Technical Assistance Partnership for Child and Family Mental Health and authored by the National Center for Mental Health and Juvenile Justice. <http://www.tpartnership.org/content/juvenileJustice/resourceSeries.php>

The **Kentucky State Advisory Panel for Exceptional Children** (SAPEC) provides policy guidance with respect to special education and related services for children with disabilities in Kentucky as defined by special education regulations and applicable state and federal law. The Panel advises and assists the Department of Education regarding the provision of appropriate services for children with disabilities. The authority for the Panel is mandated under the Individuals with Disabilities Act (20 U.S.C. 1400 et seq. as amended). The Panel conducts public forums as a part of their meetings. The public is encouraged to comment via e-mail or by coming to a meeting. For information, contact Renee Scott at renee.scott@education.ky.gov or by calling Kentucky Department of Education (KDE) at (502) 564-4970. This is a time for families and professionals to voice your concerns to the panel and they will pass them along to KDE.

Transition: Transition To Adult Health Care Providers

As you get older your health care needs will change. The teen years are a good time to talk to your health care provider about whether you need to transfer your health care to an adult provider. It's normal to feel uncomfortable about this change at first. After all, you have known your pediatrician for most of your life.

Transitions are times when changes in your life occur. Moving toward adulthood is a time of major transitions. Transitioning from a teen to an adult takes planning.

The following people can help you with your transition to adult health care:

1. Your pediatrician or nurse practitioner
2. Your social worker or clinic nurse
3. Your parents or guardians
4. An older sibling or relative
5. A friend who has been through the same process.



Prepared by Judy Blackwell, MSW at the Commission For Children With Special Health Care Needs in Lexington, Ky.

SPIN (Special Parent Involvement Network) is a statewide project of KY-SPIN, Inc. that "HELPS YOU HELP YOUR CHILD." SPIN PTI (Parent Training & Information Project) is funded by the U.S. Dept. of Education. **SPIN** provides training, information and support to people with disabilities, their parents and families, and information on all types of disabilities and topics for all age groups. There are no fees for **SPIN** services. Consultation, resource materials, and referral services are also available. You can call us toll-free at 800-525-7746 or at 502-937-6894, our e-mail address is spininc@kyspin.com and our website is www.kyspin.com; our main office is located at 10301-B Deering Road / Louisville, KY 40272.

Did you Know

You can follow us on [Facebook](#) & [Twitter](#) go to www.kyspin.com for link





**Early Childhood: WHAT HAPPENS IN A SUCCESSFUL TRANSITION?
A Step by Step Guide For Transition from First Steps to Public school
(continued from last month's newsletter)**



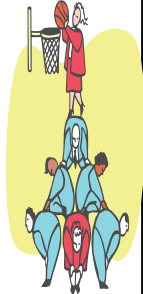
STEP 4: Individualized Education Program Planning

After the ARC determines that your child is eligible, the ARC will develop a written Individualized Education Program (IEP). The IEP can be written in the same meeting where the ARC reviews the evaluation and decides if your child is eligible. Some parents also find it helpful to develop the IEP at a meeting that is separate from this meeting. This allows them time to think through what programs or services will be most appropriate in meeting their child's individual needs.

The Individualized Education Program (IEP) is written especially for your child. The ARC develops and reviews the IEP. AS PARENTS, YOU ARE IMPORTANT MEMBERS OF THIS TEAM. The law requires that each child's IEP be developed by a team of people, not just one person. The IEP tells the following:

- what your child can and cannot do (present level of performance),
- what your child is going to be working on during the coming year (goals),
- what special services will be provided for identified areas (specially designed instruction and related services),
- what special supports (modifications and adaptations), supplementary aids and services your child will need,
- when specially designed instruction and related services will start and how long they will last; and
- how and when your child's progress will be measured and how and when this information will be shared with you. [Step 5 in next month's newsletter]

By: "Step by Step: A Family Guide for Transition into Preschool" © Version 10.0 KECTP
http://www.kentuckypartnership.org/Libraries/KECTP_Resources/Step-by-Step_Guide.sflb.ashx



Spotlight on Kentucky: Kentucky PROTECTION AND ADVOCACY (P&A)

Kentucky Protection and Advocacy, the Commonwealth's federally-mandated protection and advocacy system, was created to protect and promote the disability rights of Kentuckians. The agency does this through legally-based advocacy that includes information & referral, technical assistance, educational training, and limited legal case representation. All services are provided at no cost to consumers, regardless of citizenship status. Telephone (Message line & TTY) - 1-800-372-2988 or 1-502-564-2967 Website: www.kypa.net

The Kentucky Family to Family Health Information Centers (F2F HIC) are located in each of the Commission for Children with Special Health Care Needs (CCSHCN) Offices. The F2F's can help you find information and services. A network of Support Parents is being developed to provide support to other parents. If you have questions or would like to help another family you can reach Sondra Gilbert in Owensboro at 877-687-7038 Ext. 2123 or in Louisville, Debbie Gilbert 800-232-1160 Ext. 279

Upcoming Events

December 6, 2010

"Individualized Education Program (IEP)" Workshop
6-8pm Presented by KY-SPIN, Inc. at KY-SPIN, Inc.
10301-B Deering Road
Louisville, KY 40272
Located at corner of Deering Road and Valley Station Road in Louisville
There is no charge to attend this workshop.
For more information or to RSVP, so we have enough material for everyone, contact Rhonda Logsdon at KY-SPIN, Inc. by phone at 1-800-525-7746 or by e-mail at rhonda@kyspin.com

December 9, 2010

"Individualized Education Program (IEP)" Workshop
6-8pm Presented by KY-SPIN, Inc. at First Christian Church
1115 Hwy. 39
Somerset, KY 42501
The meeting room is located at the back entrance of the church.
There is no charge to attend this workshop.
For more information or to RSVP, so we have enough material for everyone, contact Rhonda Logsdon at KY-SPIN, Inc. by phone at 1-800-525-7746 or by e-mail at rhonda@kyspin.com



(There is no charge for these workshops. Check out our website for more events)

KY-SPIN Consultants are present at the Commission for Children with Special Health Care Needs (CCSHCN) Clinics throughout the state at various times each month. For information on clinic visits & SPIN workshops contact us toll-free at 1-800-525-7746 or by e-mail at spininc@kyspin.com.

This newsletter, published by Kentucky Special Parent Involvement Network, Inc.'s Parent Training and Information Project (SPIN), is funded through a grant from the U.S. Department of Education, and does not necessarily reflect the views of the Department of Education. Articles contained herein are for informational purposes only and do not imply endorsement by SPIN or KY-SPIN, Inc.

